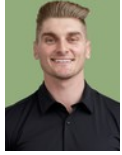




Raven Skinner
0825933921
raven@revo.co.za



Dominic Sherrell
0793766441
dominic@revo.co.za

Contact Cape Town CBD

021 2053772

3 Caledonian Road Mowbray

UNDER OFFER



Web Ref EV0347



R2,425,000

 2  2

Monthly Bond Repayment R25,030.57

Calculated over 20 years at 11% with no deposit.

Transfer Costs R109,720.00 **Bond Costs** R38,415.00

These calculations are only a guide. Please ask your conveyancer for exact calculations.

Monthly Levy R1,700

One Last Chance

Welcome to the final available unit in arguably the best product to hit the market in years.

Syringa square is a brilliant development that was prided on the premise of delivering an incredibly valuable product at an affordable price.

The design of this unit is the largest in the block, coming equipped with impeccable finishes, more than enough space and storage to fit the needs of any family, with the main bedroom coming equipped with a Juliet balcony with mountain views and an en-suite bathroom. The second bedroom leads out onto the family bathroom which is equipped with a bathtub, perfect for a family with young children.

The kitchen comes equipped with a Smeg Oven/stove and two plumbing points, spaced out perfectly to cook, while not eating into the floor space of your new home.

The unit also comes equipped with two...

Features

Pets Allowed Yes

Interior

Bedrooms	2
Bathrooms	2
Kitchens	1
Recep. Rooms	1
Furnished	No

Exterior

Carports / Parkings	2
Security	Yes
Pool	No
Views	True

Sizes

Floor Size	85m ²
------------	------------------